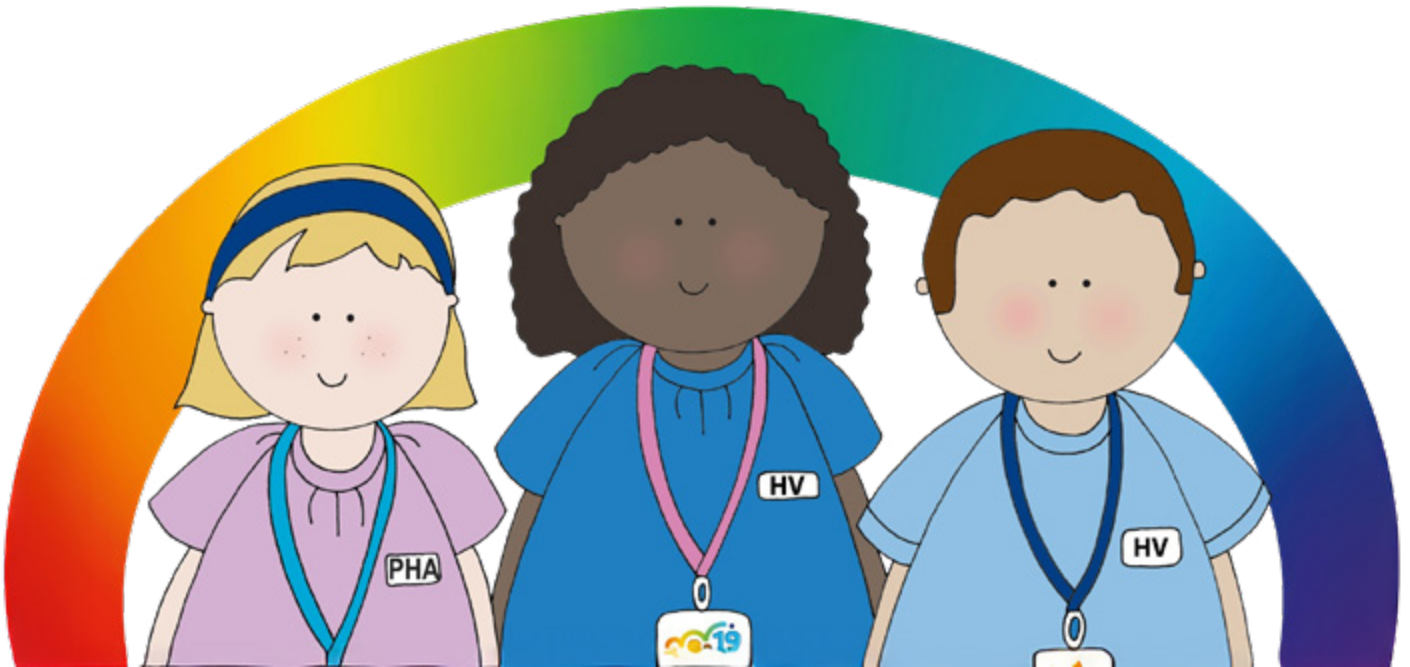


Health Visitor



Development Review

What Are Development Reviews?

A Development Review is a routine appointment offered by your Health Visiting Service to see how your child is growing, learning, and developing. They take place at key ages, between 9 – 12 months, and two years to two and a half years. These reviews are designed to support you and your child during these important early stages of life.

In addition to this leaflet, you will receive a letter or call from our Health Visiting Service, outlining details of when your appointment will take place. Development Reviews are completed either in one of our clinics at a local Health Centre or Family Hub or within your home. We ask that you complete one of the included questionnaires (ASQ), when you receive confirmation of your appointment and take with you / have available to discuss with your Health Visiting Practitioner.

9 – 12 Month Development Review

During your child's 9 – 12 month Development Review we will talk about things like weaning and feeding, speech and interaction, sleep routines and safety at home.

2 – 2.5 Year Development Review

When your child is between the age of two years and two and a half years, your child will be invited to attend another Development Review. At the review we will talk about things like general development, growth, healthy eating, behaviours, tooth brushing / oral health and vaccinations.

Why Are They Important?

Review Your Child's Development

To help us understand how your child is learning and growing, we use the Ages and Stages Questionnaire (ASQ). The ASQ is a simple questionnaire that helps us look at areas including:

- Communication and language
- Movement and coordination
- Social and emotional development
- Problem-solving and play
- Growth, hearing and vision

Early Support Can Make a Big Difference

Children grow and develop at their own pace, but sometimes they may need a little extra help. Through attending your child's development check appointment, there is an opportunity to identify any concerns early, when support can make the biggest impact.

Offers A Chance to Ask Questions

Whether it's feeding, sleep, behaviour, speech, or anything else-your child's development check offers you the opportunity to talk through any questions you may have.

No question is too small. Our Health Visiting Team are here to listen and will be able to offer guidance and support.

Please be assured that this is not a test. The use of the ASQ offers an opportunity for us to work together to support your child's development.

Your Health Visiting Team

Our Health Visiting Team are here to support you and ensure that every child and family gets the best possible start that they need. We are here to listen, offer advice and guide you through your journey to support your child to grow, learn and thrive.

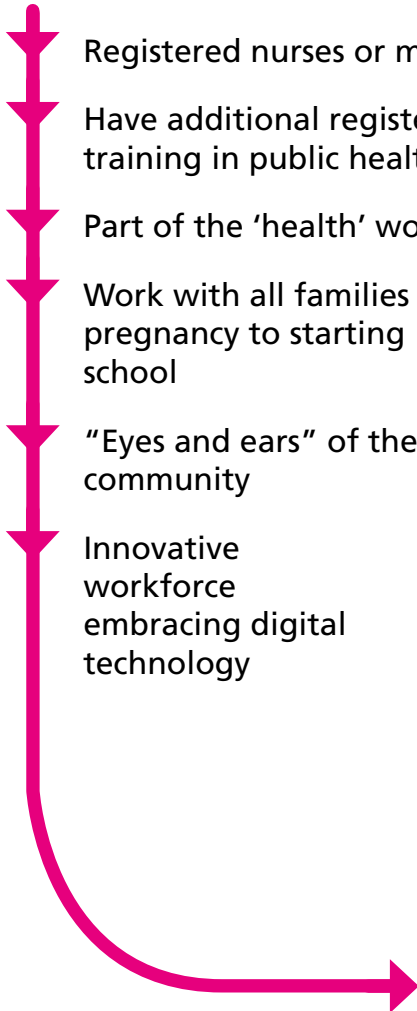
About our service

The early years of childhood, through to adolescence, are vitally important to growth, learning, overall development, and mental health.

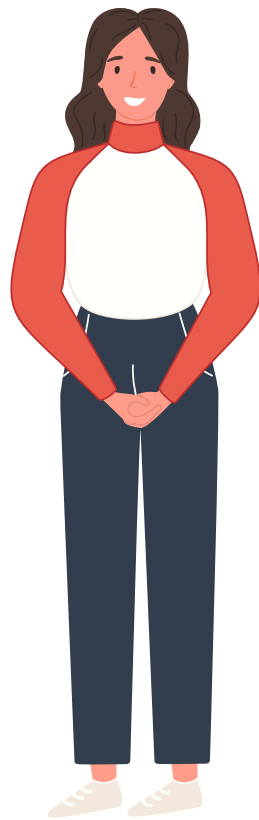
We aim to ensure that every child and family gets the best possible start they need, to lay the foundations of a healthy life.

Who are Health Visitors and what do we do?

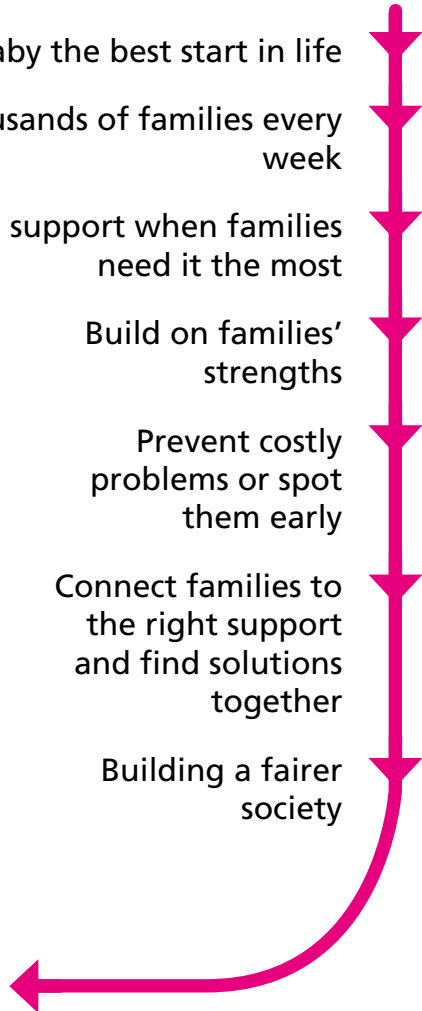
Who are Health Visitors?



- Registered nurses or midwives
- Have additional registered specialist training in public health
- Part of the 'health' workforce
- Work with all families from pregnancy to starting school
- "Eyes and ears" of the community
- Innovative workforce embracing digital technology



What do Health Visitors do?



- Give every baby the best start in life
- Support thousands of families every week
- Provide extra support when families need it the most
- Build on families' strengths
- Prevent costly problems or spot them early
- Connect families to the right support and find solutions together
- Building a fairer society



Useful contacts and resources

Best Start Family Hubs

There are eight Best Start Family Hubs across the city. Best Start Family Hub services will also be delivered through other sites across Bilston.



1. Best Start Family Hub - Eastfield, Colliery Road, WV1 2QY
2. Best Start Family Hub - Rocket Pool, Rocket Pool Drive, WV14 8BH
3. Best Start Family Hub - Graiseley, Pool Street, WV2 4NE
4. Best Start Family Hub - Bingley, Norfolk Road, WV3 0JE
5. Best Start Family Hub - Whitmore Reans, Lansdowne Road, WV1 4AL
6. Best Start Family Hub - Dove, Grangefield Close, WV8 1XF
7. Best Start Family Hub - Low Hill, 26-28 Fourth Avenue, WV10 9LZ
8. Best Start Family Hub - Children's Village, Graiseley Lane, WV11 1PE

Find out more about your nearest Best Start Family Hub:



Follow us on social media for service updates and health promotion, support and advice!



Facebook
@Wolves 0-19



Instagram
@wolves_0to19

