

Information for Patients Undergoing a Barium Enema

Radiology

The prevention of infection is a major priority in all healthcare and everyone has a part to play.

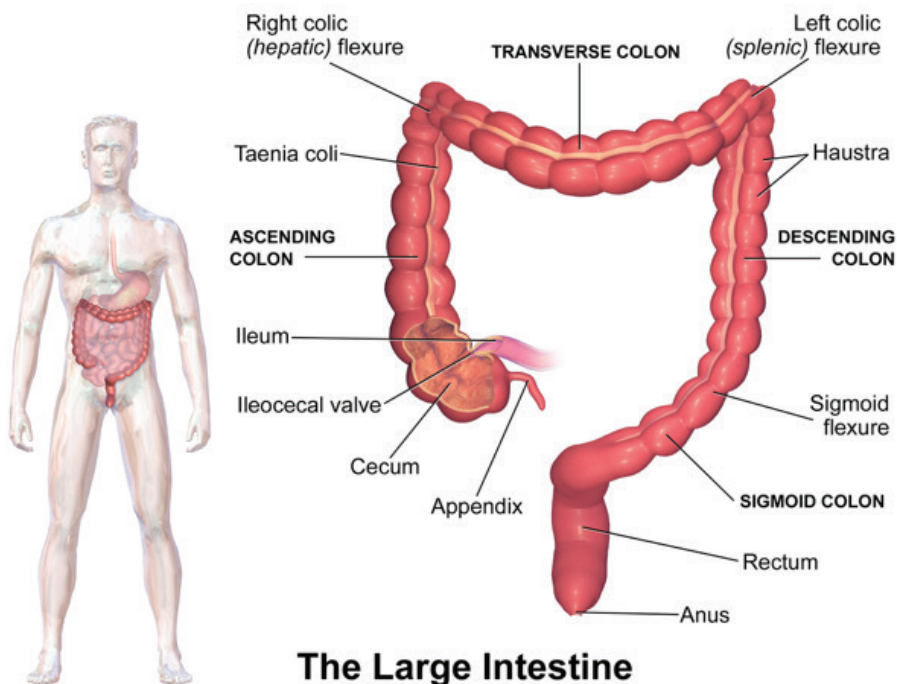
- Wash your hands with soap and warm water and dry thoroughly. Use hand gel, if provided, in care facilities.
- If you have symptoms of diarrhoea and vomiting stay at home and do not visit relatives that are vulnerable in hospital or in residential care. You will spread the illness.
- Keep the environment clean and safe. Let's work together to keep it that way. Prevention is better than cure.

The aim of this leaflet

It is not meant to replace informed discussion between you and your doctor, it is to explain what is involved and what will happen to you and to explain the possible risks of this procedure.

What is a Barium Enema?

A barium enema is an examination of the large bowel. A radiologist or a radiographer will perform this.



What happens during a Barium Enema?

You will be asked to change into a gown. In the examination room, you will lie on an X-ray couch. A small tube will be inserted into your back passage to allow a suspension of barium to run in and outline your bowel. Air is then gently pumped in to expand the bowel. The radiologist or radiographer will watch the progress of the barium and air on a television screen and take a number of films.

How long will it take?

The examination usually takes between 30 minutes and 1 hour.

Is there any preparation?

Please use the laxatives enclosed, follow the instructions carefully and be prepared for frequent bowel movements shortly after you take the first dose.

The laxatives used can have side effects. These include headache, nausea, griping pains and very occasionally vomiting. Drinking plenty of water after taking the laxative will reduce the risk of headaches.

Do I need to bring anything / anyone with me?

Please bring a dressing gown and slippers if you have them. Do not bring unnecessary amounts of money or valuables.

It would be helpful to bring a relative or friend to the department to accompany you.

What if I am Diabetic?

If you are diabetic, please contact the X-ray department as soon as you receive your appointment, so that further instructions can be given to you

Are you pregnant?

To ensure that you are not pregnant you should have this examination between the 1st and 10th day of your menstrual period. If you have not started your period in the 10 days before this appointment or you are actively trying for a family please contact the Radiology Department, it may be necessary to re-arrange your appointment. Please contact the Radiology Department as soon as you receive this appointment if you think you may be pregnant!

Are there any risks or side effects?

You may have a muscle relaxant injection in your arm; this can cause blurred vision for a short period. You must not drive after the examination until your vision has cleared. It would be advisable, if possible to bring someone with you who can drive. This injection may result in a small bruise at the injection site. In the rare event you can develop painful blurred vision within 12 hours of the injection. If this occurs please return to the hospital for immediate attention.

Barium in the bowel can cause constipation but this can be avoided by drinking plenty of fluid for the rest of the day after your investigation.

Radiation:

There are some risks involved with the use of X-rays. The overriding concern of your Doctor and Radiology is to ensure that when radiation is used the benefits from making the right diagnosis outweigh any small risk involved.

Radiologists/Radiographers who perform the examination are trained to ensure that the radiation dose associated with the examination is always kept to a minimum.

After the examination

You may eat and drink normally, drink plenty of water to avoid constipation.

When will I get the results?

The X-rays need to be studied and a report issued, so we will not be able to give you your results straight away. The radiographer will advise you where and when to get your results.

Student training

A student Radiographer may be present during the examination. If you would prefer them not to be present, please let the Radiographer know at the time.

Special needs

If you have any special needs, which are likely to affect your examination, please contact the Radiology Department.

How to contact us

If you have any questions or would like to discuss anything about your examination, before you attend, please contact the Radiology department on 01902 694062 available between 9am and 4pm, Monday to Friday.

Radiology Department A2

Level One

New Cross Hospital

Wolverhampton

West Midlands

WV10 0QP

Patient Advice and Liaison Service

New Cross Hospital

01902 695362

Email: rwh-tr.pals@nhs.net

Car Parking

Please leave plenty of time to find a parking space as parking is limited. The nearest car park to the Radiology Department is P6 situated on the south side of the hospital (charges are applicable)

English

If you need information in another way like easy read or a different language please let us know.

If you need an interpreter or assistance please let us know.

Lithuanian

Jeigu norėtumėte, kad informacija jums būtų pateikta kitu būdu, pavyzdžiui, supaprastinta forma ar kita kalba, prašome mums apie tai pranešti.

Jeigu jums reikia vertėjo ar kitos pagalbos, prašome mums apie tai pranešti.

Polish

Jeżeli chcieliby Państwo otrzymać te informacje w innej postaci, na przykład w wersji łatwej do czytania lub w innym języku, prosimy powiedzieć nam o tym.

Prosimy poinformować nas również, jeżeli potrzebowaliby Państwo usługi tłumaczenia ustnego lub innej pomocy.

Punjabi

ਜੇ ਤੁਹਾਨੂੰ ਇਹ ਜਾਣਕਾਰੀ ਕਿਸੇ ਹੋਰ ਰੂਪ ਵਿਚ, ਜਿਵੇਂ ਪੜ੍ਹਨ ਵਿਚ ਆਸਾਨ ਰੂਪ ਜਾਂ ਕਿਸੇ ਦੂਜੀ ਭਾਸ਼ਾ ਵਿਚ, ਚਾਹੀਦੀ ਹੈ ਤਾਂ ਕਿਰਪਾ ਕਰਕੇ ਸਾਨੂੰ ਦੱਸੋ।

ਜੇ ਤੁਹਾਨੂੰ ਦੁਭਾਸ਼ੀਏ ਦੀ ਜਾਂ ਸਹਾਇਤਾ ਦੀ ਲੋੜ ਹੈ ਤਾਂ ਕਿਰਪਾ ਕਰਕੇ ਸਾਨੂੰ ਦੱਸੋ।

Romanian

Dacă aveți nevoie de informații în alt format, ca de exemplu caractere ușor de citit sau altă limbă, vă rugăm să ne informați.

Dacă aveți nevoie de un interpret sau de asistență, vă rugăm să ne informați.

Traditional Chinese

如果您需要以其他方式了解信息，如易读或其他语种，请告诉我们。

如果您需要口译人员或帮助，请告诉我们。